



ZUMHOFE

*Calista.*

---

**PORTFOLIO**

---

*How does your space make you feel?*





## ABOUT ME

I have just received my masters certificate from the Heritage School of Interior Design. My passion for design started with consulting for family and friends and grew to include designing and refurbishing furniture to compliment there spaces as well as that of other clients. With the education and experience I have gained, my style has greatly developed. It is based upon how a space can effect the emotions and over all feelings of my clients as well as how that space influences the types of interactions that occur there. I have an effective and unique way of connecting with clients and am extremely perceptive when regarding there end goals as I conceptualize the design of the space.

Please enjoy my portfolio. I have included projects which were completed while attending Heritage as well as furniture pieces I previously designed for various clients.

---

Residential

Kitchen and Bath

Commercial

Furniture Design

BONUS WORK

# CONTENT

# RESIDENTIAL

## *Heritage Project*

For the final project of my Fundamentals class, I was assigned a classmate at random to go through the entire design process with. Treating my classmate, Brittany, as I would a client, I was given a space with a specific budget and time line to create an environment specifically tailored for her.



*Inspiration*

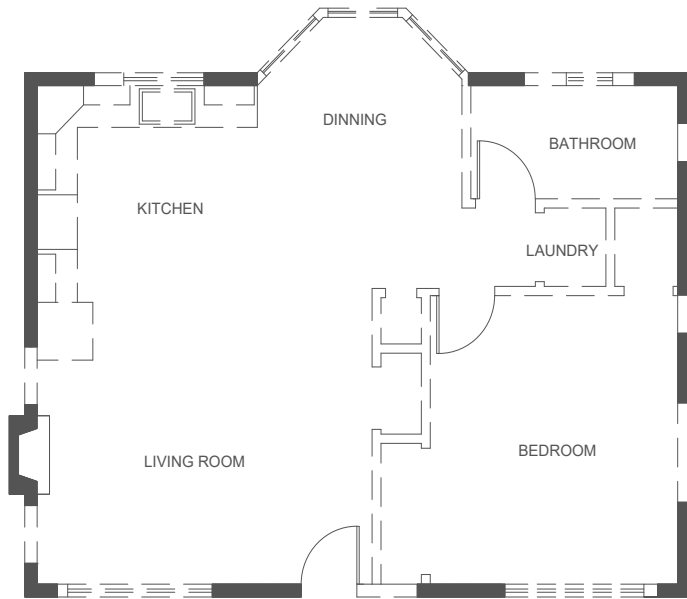






SKETCHUP PHOTOSHOP AUTOCAD





## *Objective*

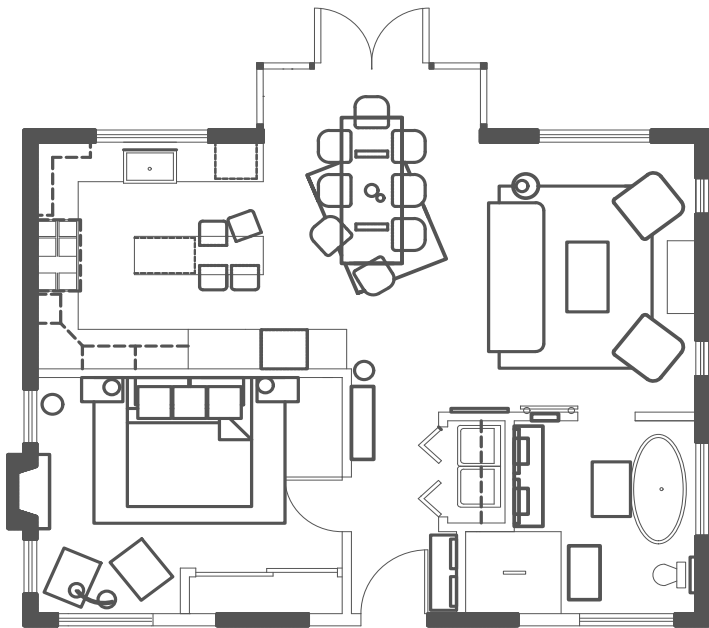
The kitchen and living room require a more defined and cohesive space which is not directly accessible by the private areas. This creates a seamless transition for relaxation and entertainment. Brittany desires to incorporate feminine and masculine elements while keeping the space clean and minimalistic. More storage is also required for my client's love of cooking.

## *Solution*

To create additional storage and privacy, I will relocate the bedroom, bathroom, and laundry areas so they are no longer facing the kitchen and dining area. The open floor plan will create the effect of the space being larger, and furniture will be used to create designated areas where there will be plenty of seating for relaxing and for entertaining guests.

## *Concept*

Brittany's space is now a calm place where her male and female guests feel welcome. It is an environment free of clutter in which she can cook, entertain, and relax seamlessly.





# BEDROOM



# KITCHEN

# Bedroom

SATIN  
888  
DRAPES

MOTORIZED  
SOLAR  
SHADES

SHAGREEN  
LEATHER

STEEL  
WINDOW  
FRAMES

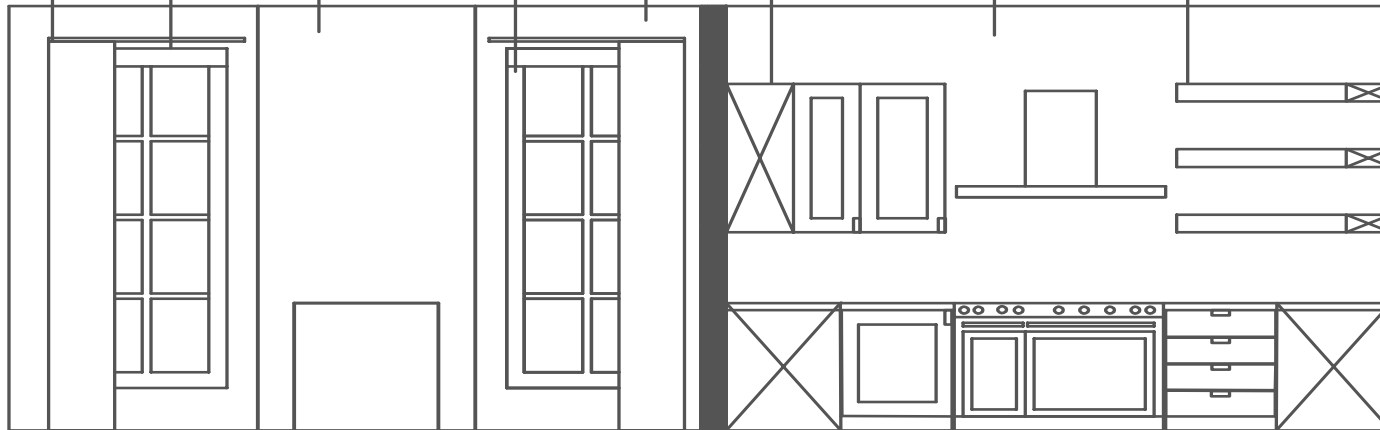
BENJAMIN  
MOORE  
PURE  
WHITE

DAYTON  
CABINETS  
-CARBON

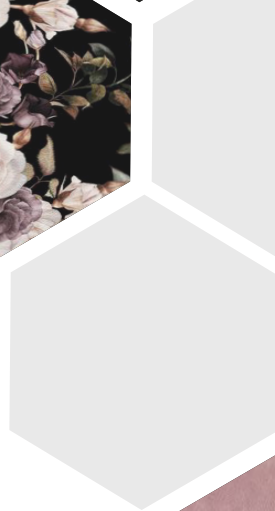
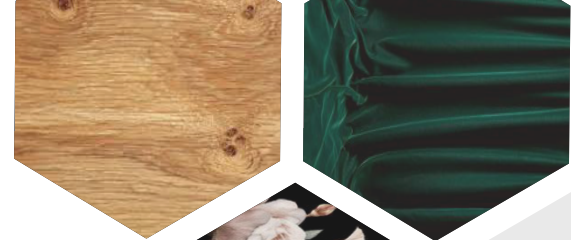
# Kitchen

THUNDER  
WHITE  
GRANITE

OPEN  
SHELVES  
-CONCRETE



WEST WALL ELEVATION 1/2" = 1'







# LIVING ROOM





# KITCHEN AND BATH

## *Heritage Project*

My Kitchen and Bath Final Project was to create a space using the tools I had learned. The class was given an original floor plan and the opportunity to create their own aesthetic.



## Objective

The restroom has limited space and needs appropriate storage without making the space seem smaller. The kitchen needs to incorporate massive storage and prep areas so multiple people may use the kitchen at the same time.

## Solution

In the restroom, I will run flooring seamlessly through the shower. A glass enclosure will be used so nothing will obstruct the line of site through the space. In addition I will use contrasting colors, keeping the darkest color on the back wall in the shower. This will elongate the space. The storage will consist of a large medicine cabinet from Kohler as well as a large vanity. The Kitchen will have floor to ceiling cabinets and a corner pantry for plenty of storage. A large island will give plenty of prep space. With a 48 inch clearance from the parallel cabinets, there is plenty of room for multiple chefs.

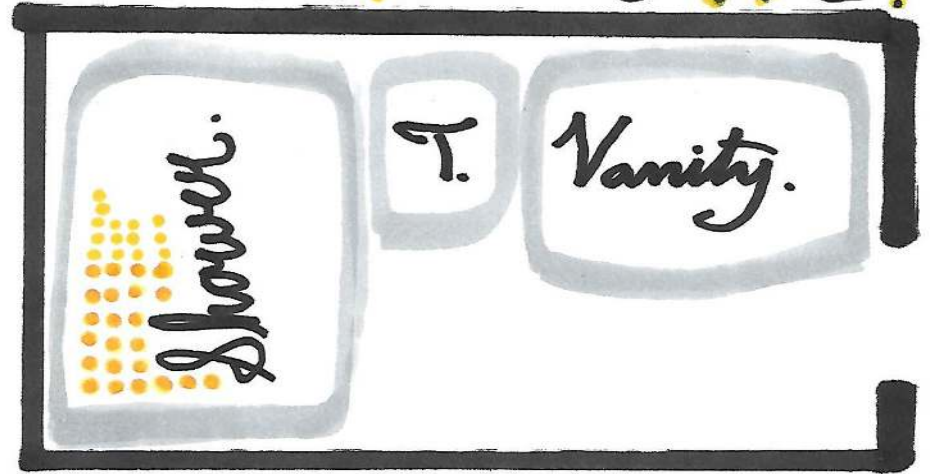
## Concept

Both spaces are warm and inviting, ready for large, family gatherings. The perfect mixture of warm and cool colors will create a space calm enough for your first cup of morning coffee and bold enough for the in-laws.

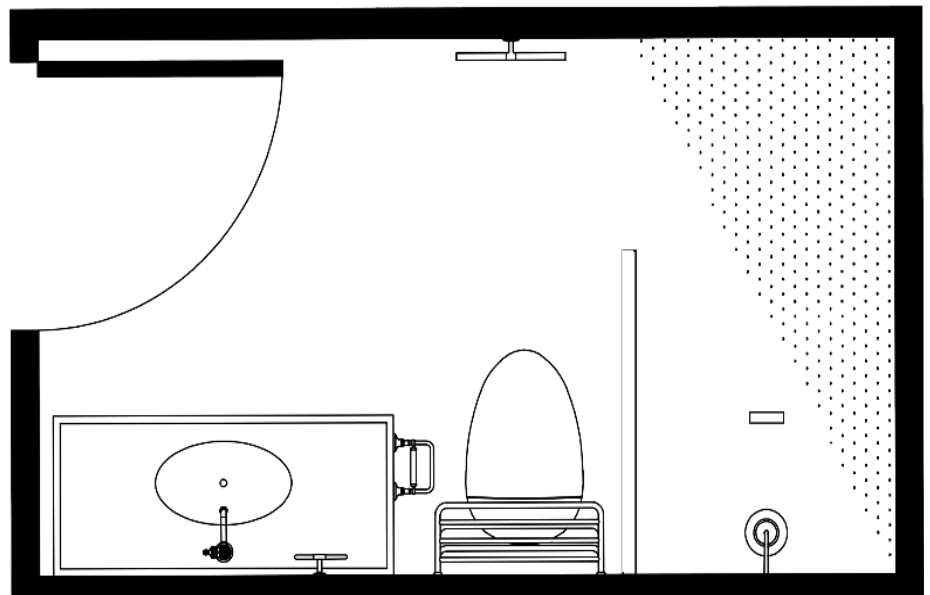


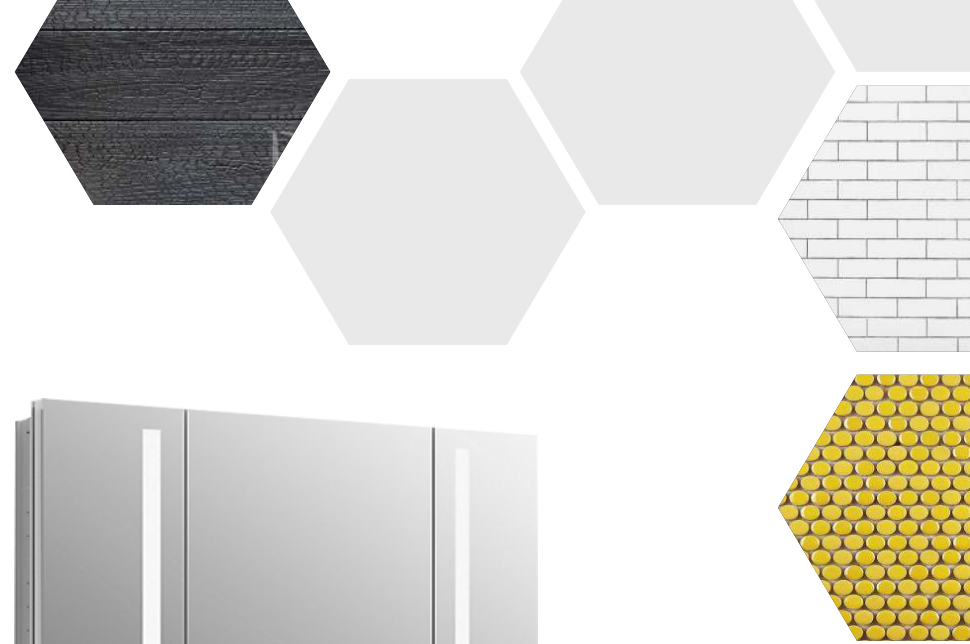
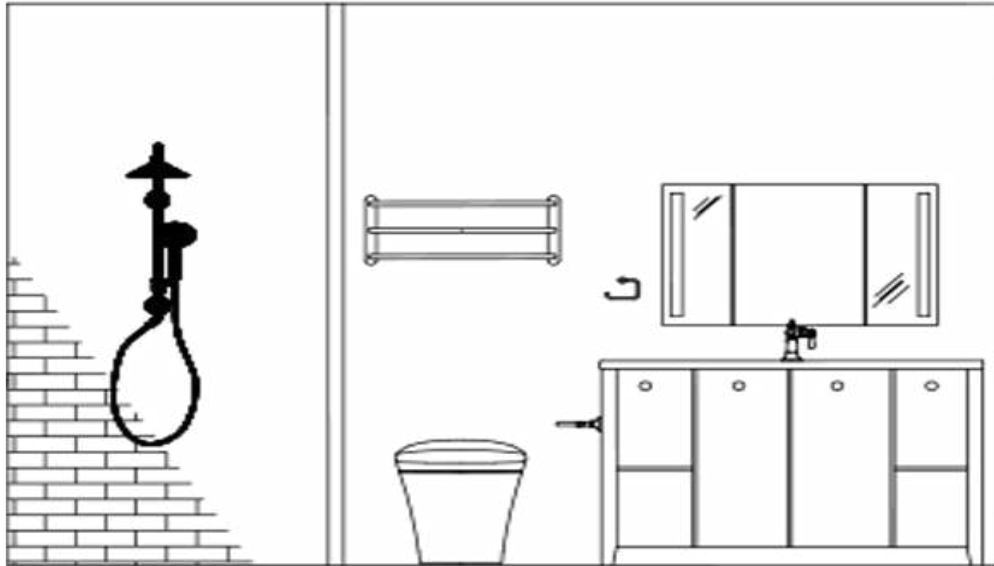


# Bathroom.



SPACE PLAN

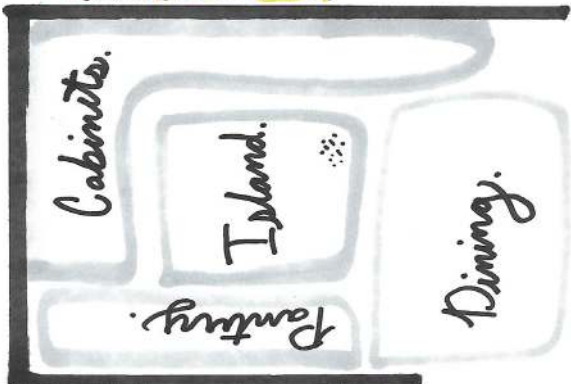




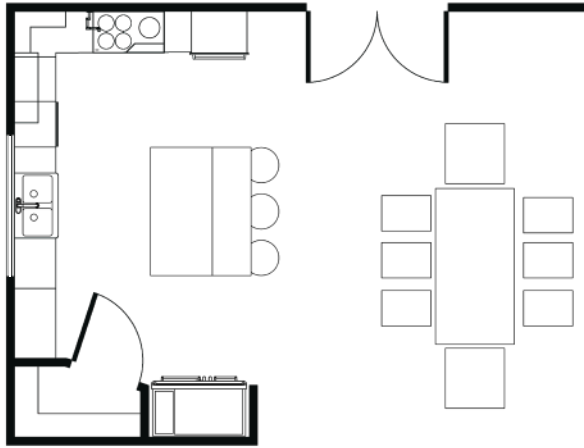
**BATHROOM**

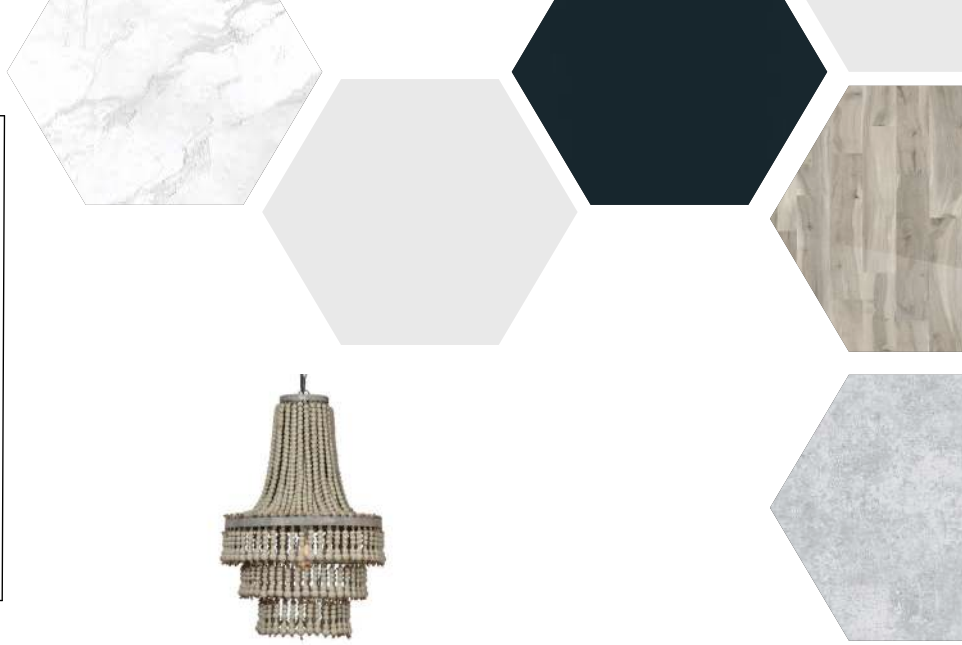


# Kitchen.



**SPACE PLAN**





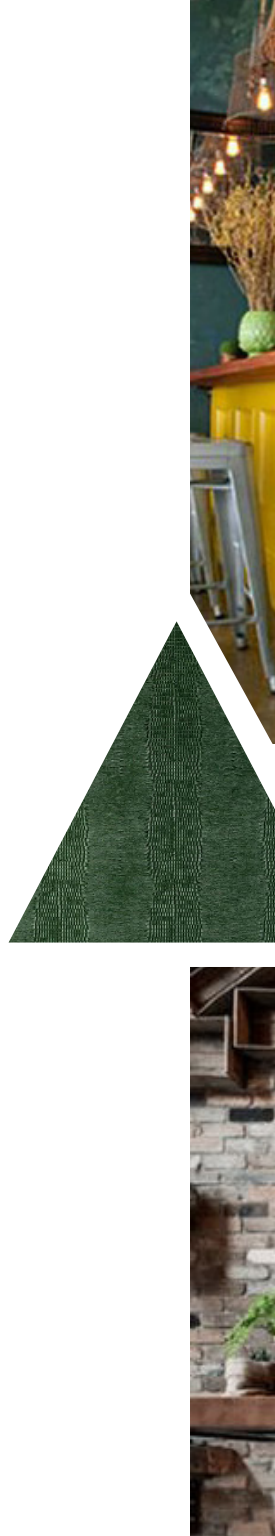
SKETCHUP PHOTOSHOP AUTOCAD

# KITCHEN

# COMMERCIAL

## *Heritage Project*

My Commercial Design Class randomly assigned a commercial space to research and so address business space requirements and create branding for the business assigned. I was assigned a cafe in a rural, college town. Going through the design process and with no perimeters on aesthetic, I created Unlocked Cafe and Brew in Coeur d' Alene, Idaho.







pinterest photos



# Objective

To accommodate more guests, the restrooms will need to be enlarged. Additional dining is also required as well as a way to accommodate all types of guests and their differing needs.

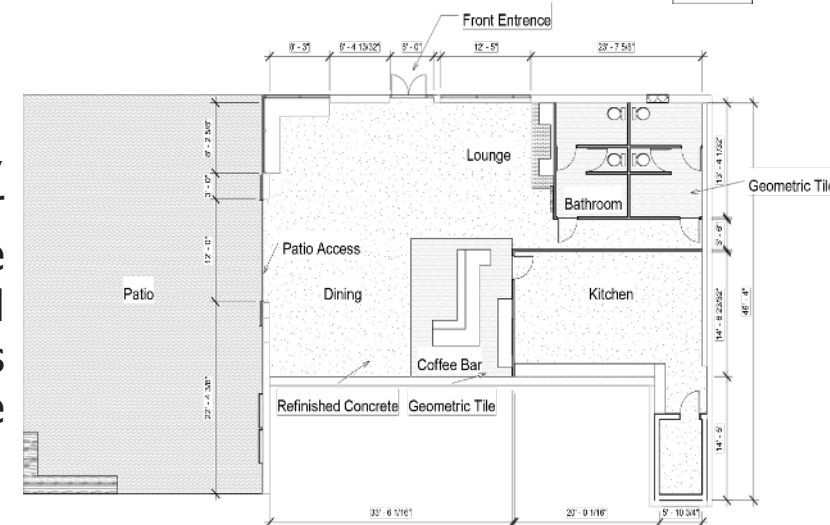
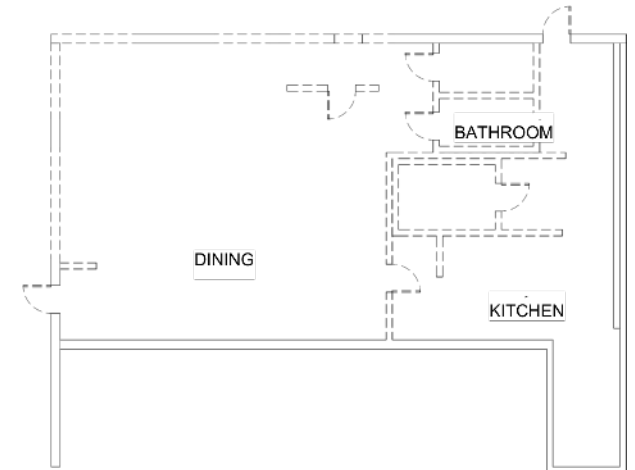
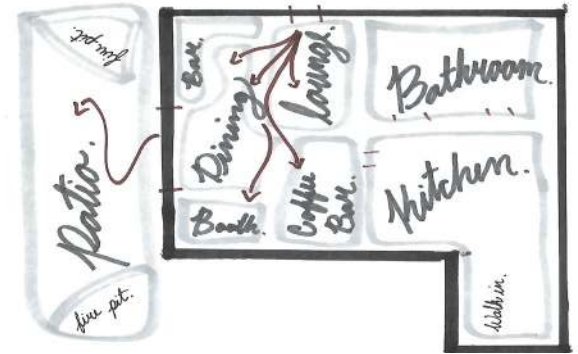
# Solution

The restroom doors will be relocated so I can add another stall to both men's and women's restrooms. In addition to accommodating more guests, this also adds additional privacy. To accommodate the tourists, students, and locals, a coffee bar and lounge will be added along with both single and multiple guest seating areas. These areas will be clearly established with way-finding, using flooring and furniture.

# Concept

Unlocked Cafe and Brew is the perfect place to meet with friends, be creative, to study, and/or dine with family. The new Coeur d'Alene (CDA) Cafe has been Unlocked. The original architecture and added earth tones give this cafe a vibe all its own. Natural lighting, exposed wood, and an added coffee bar will make this the regular spot. The entire CDA community will feel welcome to stay and relax.

## SPACE PLAN



# UNLOCKED

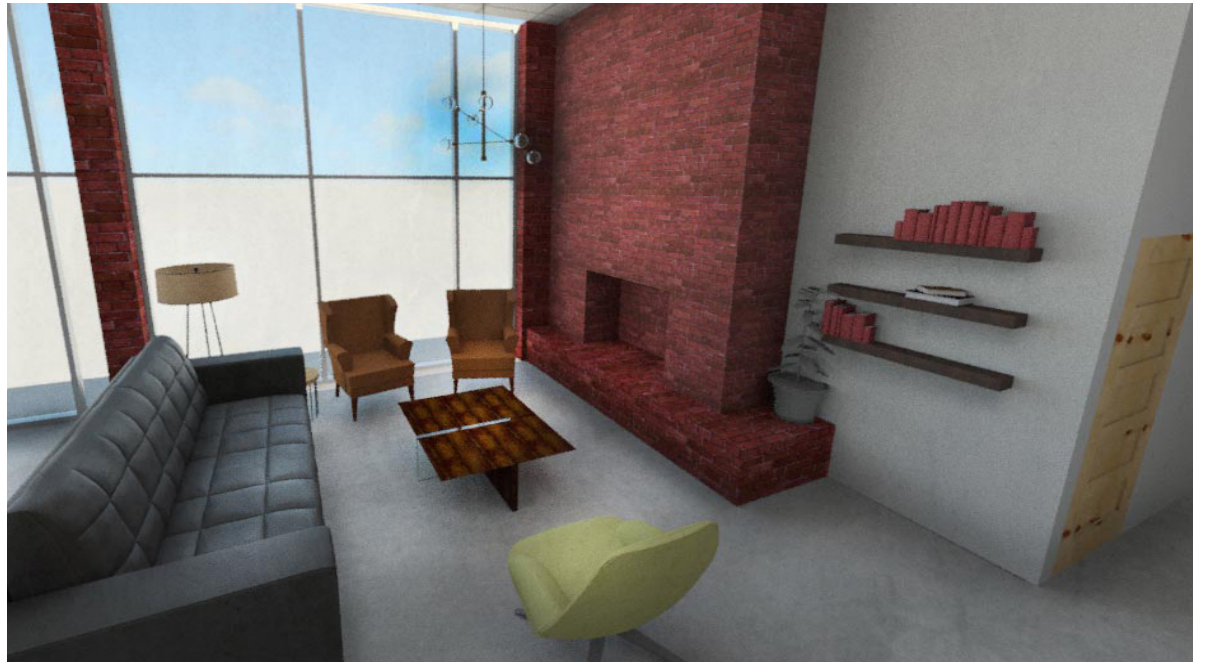
*Cafe and Brew*



REVIT PHOTOSHOP



# Lounge.

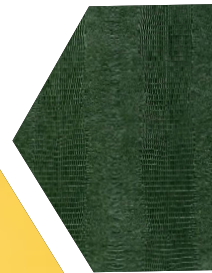
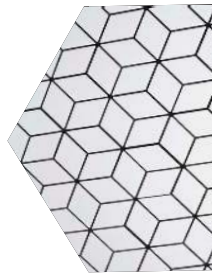


REVIT    PHOTOSHOP    HAND RENDERING





*Dining*



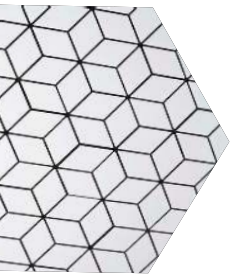




REVIT    PHOTOSHOP    HAND RENDERING



# *Patio.*





*Material.*



# Furniture Design.



My love for design all started with a dresser. I discovered this dresser for five dollars in the middle of a hot day during yard sale season in Idaho. After mixing a few of my Grandfather's extra paints together, I gave this dresser new life. This dresser stayed with me and my passion grew. I love giving pieces that have history a new beginning so its story may continue. Shown in this section are a few pieces I have built, redone, and repaired. I have also included signs I made specifically for Phil's Family Foods Grocery stores in central Idaho.



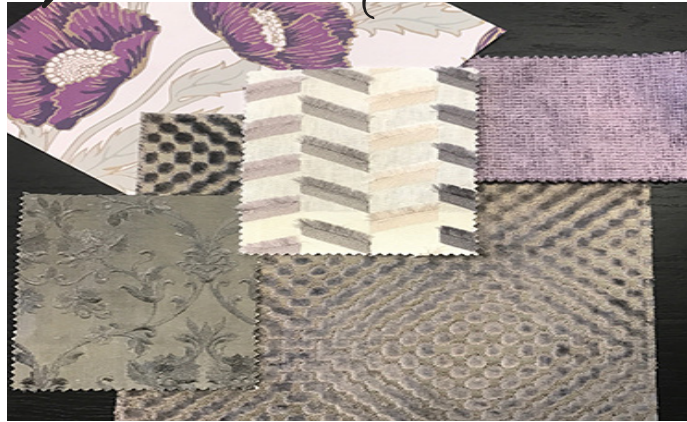




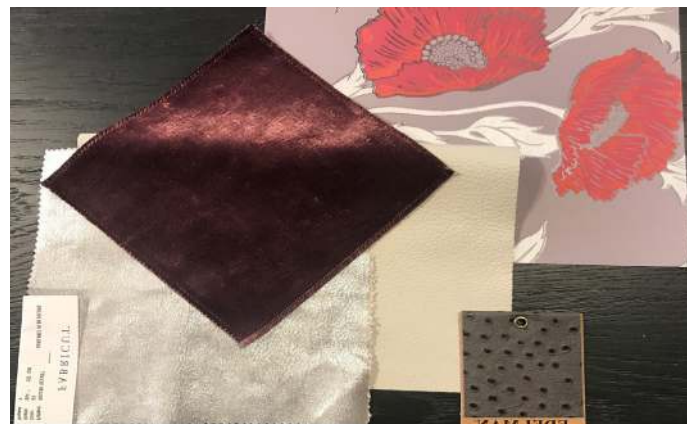
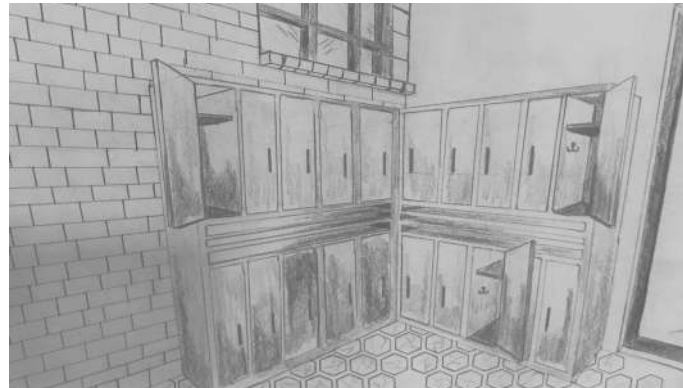
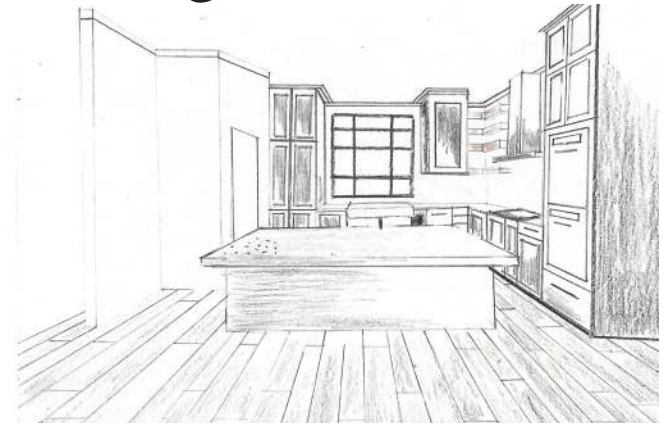
*Contemporary Concept Board.*



# Material selection



# Sketches





**THANK YOU**

*Thank you!*

Thank you for taking your time to review my portfolio. I am passionate about using people's spaces to improve the quality of life and with every experience, my work continues to grow. My contact information is provided on the following page. Any questions or feedback would be greatly appreciated.

Thanks Again!

---





czumhofe@gmail.com



(208) 791-8831



Brighton, Colorado